

Today's Message

"From Hurt to Hope with Help"

Rev. Robert Pudell, Executive Pastor
Immanuel Lutheran Church

Catch up on past sermons you may have missed at: www.immanuelcl.org/media-resources

New Here... Welcome!

If you are new to Immanuel Lutheran Church and School, we would love to meet you! Be sure to stop by our "Connection Center" where a **welcome gift** is waiting for you, and thanks for sharing worship with us today!

What's Happening:

You can always keep in touch with what's happening by checking in at our website: www.immanuelcl.org

Connecting

A Connection card helps us to get to know you! We like to send a thank you for visiting us, and to help you find classes or connections that might best fit what you are looking for.

I'd like to Know More

We would love to answer your questions! Call the church office or email: stieman@immanuelcl.org

Service Times: Saturday Evenings, 6:00pm Historic Church • Sunday Mornings 8:00 - 9:30 - 11:00 Pathway Court *



BEGINNING AUGUST 27, 2017

WHAT IS TRANSFORMED?

TRANSFORMED is a church-wide seven session Campaign that will guide and grow you by exploring what the Bible has to say about every essential area of our lives: Spiritual, Physical, Mental, Emotional, Relational, Financial and Vocational.

The key message is the only way to truly change your life is to change the way you think. That is why the key verse for this series is Romans 12:1, "Do not conform any longer to the pattern of this world but be transformed by the renewing of your mind".

The study looks at the two key words in this statement, Conform and Transform.

What is the difference?

According to the dictionary, to conform means to "make or become the same" or "to behave in a conventional way by accepting, without questions, the customs traditions and prevailing opinions of others". In other words, to conform is to fit into somebody else's mold; it's to do things the way everybody else does.

On the other hand to transform means "Change the condition, function, nature, character or personality of something." CONFORM TRANSFORM Relates to behavior Relates to character Effect is from outside in The development is from inside out

CONFORMING has to do with **BEHAVIOR**.

TRANSFORMING has to do with **CHARACTER**.

CONFORMING is **FROM THE OUTSIDE IN**.

TRANSFORMING is **FROM THE INSIDE OUT**.

The world is shouting for our attention with answers to our relationship struggles, solutions to our financial trouble, and explanations to our search for meaning. But the world's promises leave us empty and searching for more. God's will is the only answer that promises to TRANSFORM our lives from the inside out.

Let's be TRANSFORMED together. For more information, contact Pastor Bob Pudell bpudell@immanuelcl.org

Coming Up at >>



Immanuel

>> Sunday, August 6, 2017 - Ninth Sunday after Pentecost

Touching Hearts and Transforming Lives with the Light of Jesus Christ...



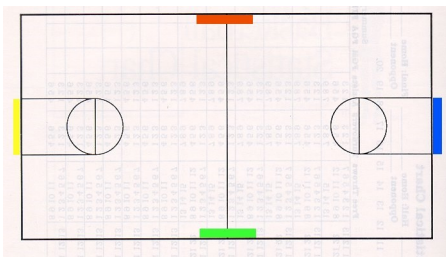
FAMILY LIFE TOGETHER -Summer Worship - Join us every week this summer as Immanuel zeros in its focus on families. Family Life Together is not just a sermon series, but a way of equipping and encouraging families to make faith, family and fun your passion for the summer. Each week's worship will have a new, relevant parenting or relationship topic as well as take-home conversation starters for you to continue the talks at home. Kids, teens, young adults, grandparents, aunts & uncles... everyone who is part of a family is encouraged to be a part of this meaningful worship experience!

Adult Studies
Sundays at 9:30 am
The Gospel of Luke — Music Room

It's cool, cool, cool at a Lutheran school, school, school!!!
There are still some spots open for the 2017/2018 school year.
Call Sheila O'Malley or Ed Bower at 815.459.1444 for more info!



Altar Flowers are in celebration of LaVera Kennison's birthday, by Tass and Gerda Lawin.



GYM FLOOR IS BEING REFINISHED — The gym is closed for use beginning Tuesday, August 8, as the floor is being stripped, sanded, and refinished. A new coating of finish will be applied following a sanding of the floor. The building will be closed on Tuesday and will have limited access the remainder of the week. Please note that should you come into the building, there will be a strong odor from the materials being used. The offices will be closed during these four days — August 8—11.

Family Fall Fest
SAVE THE DATE!! **September 22—24, 2017** at Immanuel Lutheran Church & School — 300 S. Pathway Court. Full carnival, rides, game booths, food! Open to the Public! Watch for more details coming soon . . .

rightnow MEDIA

Quality Kids Christian Programming: RightNow Media is a free, Netflix like Christian resource for adults and kids alike, which has age-appropriate kids' programming. All church members will be receiving an invitation to access RightNow Media. But, this free resource is open to *anyone*, so if you would like an invitation contact Laura at lgilleland@immanuelcl.org or in the church office.

Get the latest weekly Announcements, event postings, and information at: www.Immanuelcl.org

* **Families with Young Children:** Changing tables are found in the washrooms down the hall on the left of the worship area. Nursing Mom's room is located behind the desk in the Library (doors on the back wall of worship area).